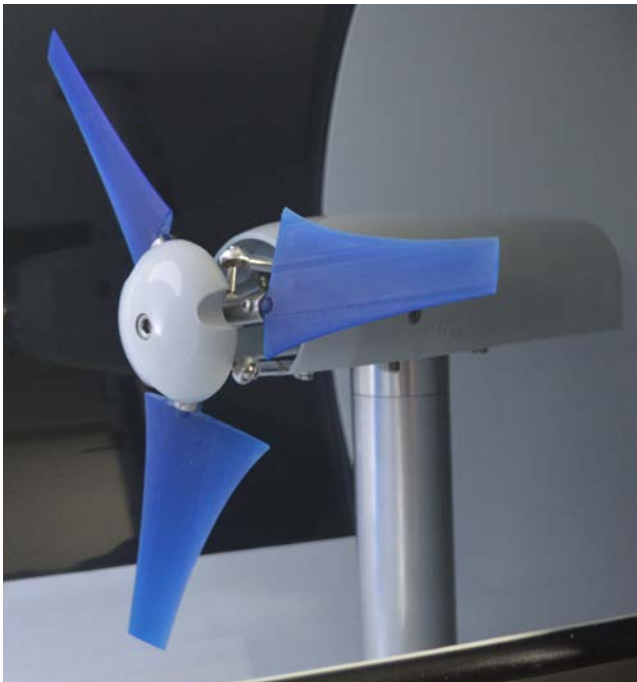


# ALTERNATIVE ENERGY

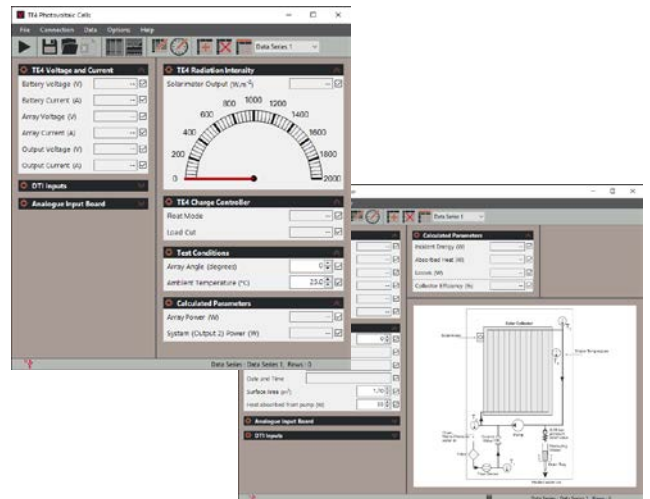
The Solar Energy range offers teaching equipment for the core principles of solar energy, including photovoltaic cells, flat plate solar thermal energy collectors and focusing solar energy collectors. Students can learn about the efficiencies and limitations of each method of harnessing and converting solar energy for use in the real world.

 **YouTube** ALTERNATIVE ENERGY PLAY LIST



## FEATURES AND BENEFITS:

- **PHOTOVOLTAIC, FOCUSING AND FLAT PLATE ENERGY COLLECTION:** Demonstrates three key methods used in harnessing solar energy.
- **AUTOMATIC DATA ACQUISITION:** VDAS® is particularly useful when monitoring longer duration experiments.
- **SAFE AND EASY SET-UP:** Low temperatures, safe connections and simple, hand-operated controls allow the set up an experiment safely and quickly.



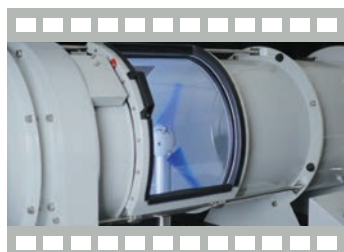
## WIND ENERGY

# WIND TURBINE DYNAMICS



AE1005V

This is a versatile, compact apparatus for teaching the fundamentals of kinetic wind energy conversion into electrical power. Flexibility is at the core, it has a castor-mounted frame for mobility and functionality and allows students to 3D-print their own blades for advanced experimentation.



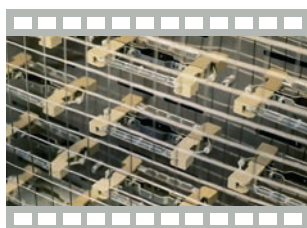
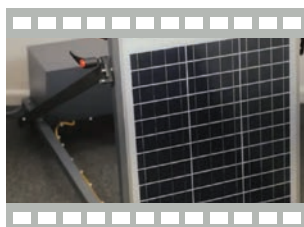
## SOLAR PHOTOVOLTAIC

# PHOTOVOLTAIC CELLS

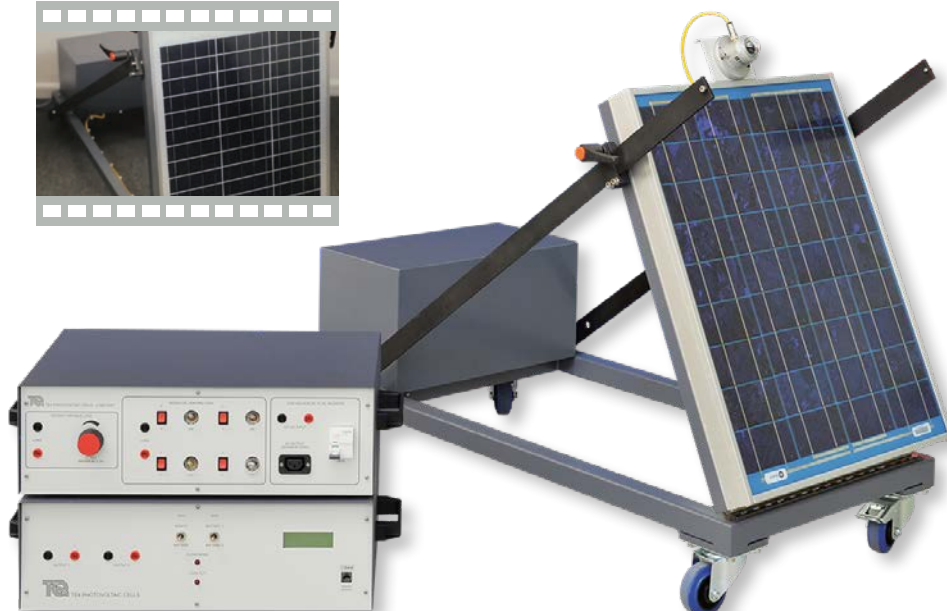


TE4

Floor-standing mobile apparatus with instrumentation, includes high and low-capacity batteries. It illustrates how effective photovoltaic cells are in capturing solar energy.



SOLAR LOAD BANK (TE4A)



## SOLAR THERMAL



### FOCUSING SOLAR ENERGY COLLECTOR **VDAS**<sup>®</sup>

TE38

Floor-standing mobile apparatus that illustrates the workings of a focusing solar energy collector and allows students to study its performance. Supplied with four sizes of absorber.



### FLAT PLATE SOLAR THERMAL ENERGY COLLECTOR **VDAS**<sup>®</sup>

TE39

Floor-standing, folding mobile apparatus with instrumentation that illustrates the workings of a flat plate solar energy collector and allows students to study its performance.



## HYDRO

### HYDRO-ELECTRIC TURBINE



AE1000V

The TecQuipment Hydro-Electric Turbine is a versatile, floor-standing, self-contained apparatus for demonstration of hydro-electricity. It is supplied with five different propellers. The product focuses on exploring the best efficiency point of different propellers and perform energy audits to analyse system performance.



